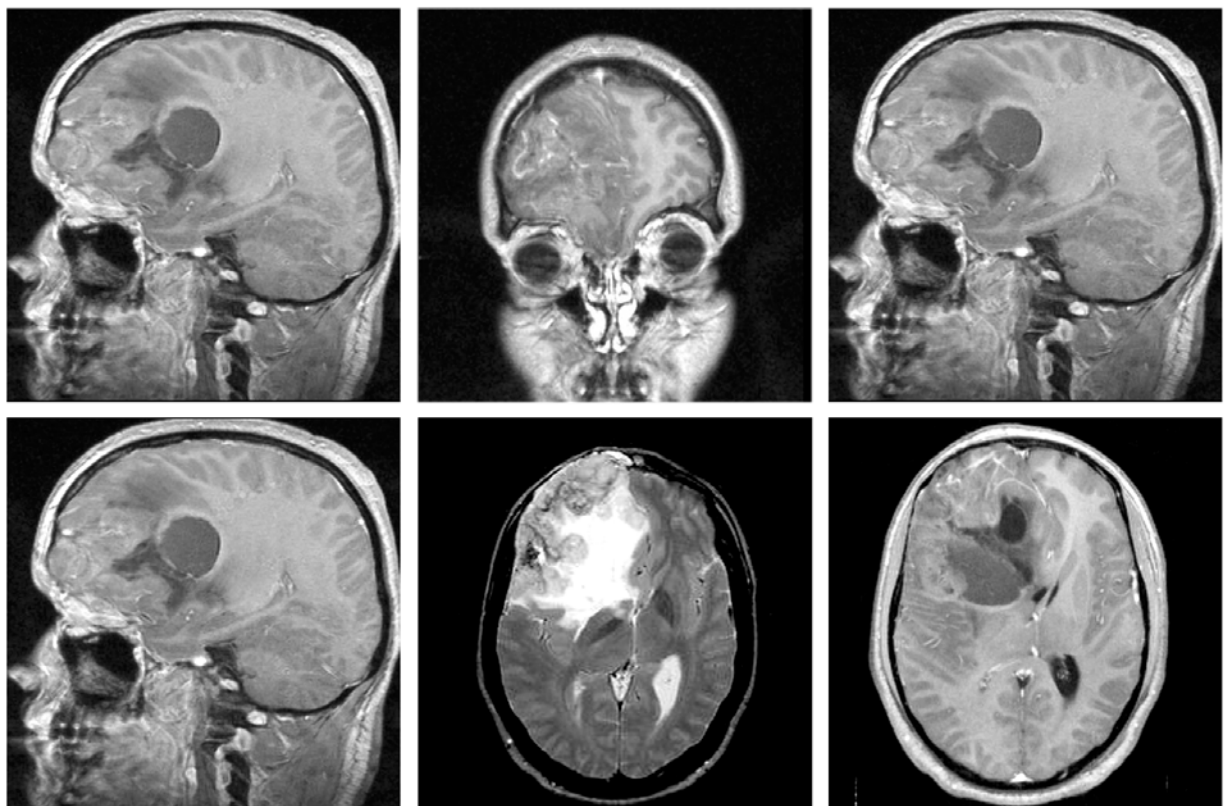


**Dr Melançon:** A series of Balo's typical MRI appearance



**Dr Melançon:** Papillary glioneuronal tumour

# Montreal Neuroradiology Study Club

Next meeting is Tuesday, June 11<sup>th</sup>

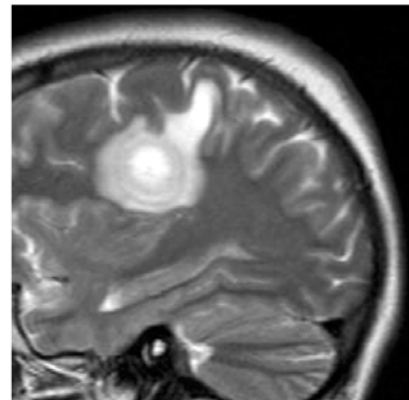
## Cases discussed at the May Study Club ...

### DR LEVENTAL:

- ⌘ Cranial epidural lesion of extramedullary hematopoiesis in a case of polycythemia vera (images will be shown in next bulletin)

### DR MELANÇON:

- ⌘ A case of Balo's concentric sclerosis
- ⌘ An unusual brain tumour



**Dr Melançon:**  
Balo's concentric pattern

### Those who attended the meeting:

*Drs Vezina, Levental, Ferraris, Rosati, Caire, Lafontaine, Melançon, and Mr D'Onofrio from Berlex. Attendance was limited, due to the ASNR meeting in Vancouver.*

PLEASE NOTE THAT THE MEETING STARTS AT 6PM-18HRS and don't forget to sign the attendance sheet

You can bring your cases on films or CD's  
**R.S.V.P.** by calling 398•1908 or faxing 398•2829

This study club is made possible from a contribution by  
**BERLEX CANADA INC.**

**FUTURE MEETINGS:**  
Berlex is looking at BTRC as site of eventual CHUM-MUHC meeting